

TRAINING COURSES GUIDE

2019



“Your safety is our
priority”

GET
COMPLIANCE



COURSE INDEX

PG	COURSE TITLE	COURSE CODE
NATIONALLY RECOGNISED TRAINING		
4	Provide cardiopulmonary resuscitation (CPR)	HLTAID001
4	Perform rescue from a live LV panel (LVR)	UETDRRF06B
5	Perform pole top rescue (RPT)	UERRDRRF02B
5	Perform EWP rescue (REWP)	UETDRRF03B
6	Perform EWP controlled decent escape (EWPD)	UETDRRF08B
6	Testing of connections to low voltage electricity networks (POL)	UETDRRF11A
7	Working safely near live electrical apparatus as non-electrical worker (WSNEA)	UETTDREL14A
7	Perform tower rescue (STR)	UETDRRF04B
8	Apply currency of safe working practises and compliance verification of electrical installations (G197)	UEENEEG197A
8	Establish legal and risk management requirements of small business (B401)	BSBSMB401
ELECTRICAL CONTRACTOR LICENCING		
8	Apply currency of safe working practises and compliance verification of electrical installations (G197)	UEENEEG197A
8	Establish legal and risk management requirements of small business (B401)	BSBSMB401
ENERGEX APPROVED TRAINING		
9	Underground awareness	M428
9	Electrical awareness for non-electrical workers	M320
9	Overhead services	M203
10	Pole inspection for safe work	M287
10	Substation Awareness	M204
10	Connections to the LV network	M292
10	Individual of a workgroup	M581
SPECIALTY SAFETY TRAINING - Low Voltage Electrical Operations		
11	Working on energised LV overhead conductors	M340/M341
11	Working on energised LV underground cables and equipment	M340/M342
11	Working on energised LV electrical installation	M340/M343
12	Electrical installations - wiring rules AS/NZS 3000:2007	LV001
12	Electrical safety legislation	LV002
12	Investigating shock complaints and fault finding	LV003
12	Electron migration theory	LV006
12	Loop impedance testing	LV007
12	RCD testing and fault finding	LV008

PG COURSE TITLE

COURSE CODE

SPECIALTY SAFETY TRAINING - High Voltage Switching, Isolation & Access

13	High voltage safety awareness	HV001
13	High voltage distribution networks	HV002
13	High voltage distribution network access manual	OM52

COMPANY OVERVIEW

Derek Green, GET Compliance CEO recalls, as an electrical inspector at 26 years of age, carrying the body of an electrical worker who died from an electric shock on a worksite. Derek's job required him to assess the body and complete reports for the Coroner.

"You don't forget those things; the family want to know what happened, why he got hurt, and what could have been done to prevent it."

That's why we are here. To make sure these terrible incidents don't happen and that people understand how to be safe when dealing with electrical energy and how to prevent incidents from happening.

For anyone who experiences our training, its never about just 'ticking the boxes!' It's about understanding and knowing why... why you wear gloves... why you wear safety clothing. There is always a reason - that reason is you.

Our philosophy at GET Compliance - we don't talk about clients or students; they're people who have come to us, entrusting us to keep them safe, to train them in how to protect themselves and stay safe at work.

Our business philosophy is to provide that invaluable relationship for those who put their trust in what we do. As a unique and recognised industry leader, we provide excellence in innovative training and safe system management. We are committed to influencing how people think about safety and ensuring electrical safety is effectively integrated into the workplace.



Derek Green
CEO & Founder
GET Compliance



NATIONALLY RECOGNISED TRAINING

Our nationally recognised training meets the needs of students, employers and the wider electrical industry. All units delivered by GET Compliance are offered under the national framework, supporting those who work across states or networks who may require a national competency. GST does not apply



- * AQF volume of learning indicators are a starting point only and many factors can affect the amount of training required.
- * LLN Scale. Level 1/2 (very limited proficiency. Level 3 (minimum/adequate proficiency standard. Level 4/5 (good/excellent proficiency).

Provide cardiopulmonary resuscitation (CPR)

Perform rescue from a live LV panel (LVR)

COURSE CODE	HLTAID001
LOCATION	On-Site / Private
MODE	Face to Face
DURATION	2-4 hours*
COST	\$120 - initial training \$79 - refresher training

COURSE CODE	UETDRRF06B
LOCATION	On-Site / Private
MODE	Face to Face
DURATION	2-4 hours*
COST	\$120 - initial training \$79 - refresher training

This unit describes the skills and knowledge to perform cardiopulmonary resuscitation (CPR) in line with the Australian Resuscitation Council (ARC) Guidelines.

This unit applies to all workers who may be required to provide CPR, in a range of situations, including community and workplace settings.

PRE REQUISITES	None required
PPE REQUIRED	None required
LLN SKILLS*	Sound
RECOGNITION	On successful completion of this unit, participants will be issued with a Statement of Attainment.
COMPETENCY ASSESSMENT	Participants will be required to successfully complete written and practical assessment to demonstrate they are competent in the application of this unit of competency.
RE-ACCREDITATION	6 months or as determined by employers WH&S Policy

This Competency Standard Unit covers the performance of rescue procedures from live Low Voltage (LV) apparatus, not including overhead lines and underground cables in the work place. It specifies the mandatory requirements of rescue from a live LV panel and how they apply in the context of transmission, distribution or rail work functions. It encompasses responsibilities for health, safety and risk management processes at all operative levels and adherence to safety practices as part of the normal way of doing work.

PRE REQUISITES	Perform cardiopulmonary resuscitation (CPR) HLTAID001
PPE REQUIRED	Long Sleeve Hi-Vis Shirt & Pants Steel Capped Boots Helmet, Gloves , Safety Goggles
LLN SKILLS*	Reading 3 Writing 3 Numeracy 3
RECOGNITION	On successful completion of this unit, participants will be issued with a Statement of Attainment.
COMPETENCY ASSESSMENT	Participants will be required to successfully complete written and practical assessment to demonstrate they are competent in the application of this unit of competency.
RE-ACCREDITATION	As determined by employers WH&S Policy

5★ - Scott D

Perform pole top rescue (RPT)

COURSE CODE	UETDRRF02B
LOCATION	On-Site / Private
MODE	Face to Face
DURATION	2-4 hours*
COST	\$120 - initial training \$79 - refresher training

This Competency Standard Unit covers the performance of pole top rescue procedures as an emergency procedure required in the workplace. It specifies the mandatory requirements of rescue from a pole top and how they apply in the context of transmission, distribution and rail work functions. It encompasses responsibilities for rescue, health, safety and risk management processes at all operative levels and adherence to safety practices as part of the normal way of doing work.

PRE REQUISITES	Perform cardiopulmonary resuscitation (CPR) HLTAID001
PPE REQUIRED	Long Sleeve Hi-Vis Shirt & Pants Steel Capped Boots Helmet, Gloves , Safety Goggles
LLN SKILLS*	Reading 3 Writing 3 Numeracy 3
RECOGNITION	On successful completion of this unit, participants will be issued with a Statement of Attainment.
COMPETENCY ASSESSMENT	Participants will be required to successfully complete written and practical assessment to demonstrate they are competent in the application of this unit of competency.
RE-ACCREDITATION	As determined by employers WH&S Policy

Perform EWP rescue (REWP)

COURSE CODE	UETDRRF03B
LOCATION	On-Site / Private
MODE	Face to Face
DURATION	2-4 hours*
COST	\$120 - initial training \$79 - refresher training

This Competency Standard Unit covers the performance of rescue procedures from an Elevated Work Platform (EWP) in the work place. It specifies the mandatory requirements of rescue from a raised EWP by a work party member on the ground and how they apply in the context of transmission, distribution or rail work functions. It encompasses responsibilities for health, safety and risk management processes at all operative levels and adherence to safety practices as part of the normal way of doing work.

PRE REQUISITES	Perform cardiopulmonary resuscitation (CPR) HLTAID001
PPE REQUIRED	Long Sleeve Hi-Vis Shirt & Pants Steel Capped Boots Helmet, Gloves , Safety Goggles
LLN SKILLS*	Reading 3 Writing 3 Numeracy 3
RECOGNITION	On successful completion of this unit, participants will be issued with a Statement of Attainment.
COMPETENCY ASSESSMENT	Participants will be required to successfully complete written and practical assessment to demonstrate they are competent in the application of this unit of competency.
RE-ACCREDITATION	As determined by employers WH&S Policy

Great guys with lots of knowledge. You can always get training but to get training and come away with a full understanding is priceless.

Highly recommended. 5 ★ - Joel S

NATIONALLY RECOGNISED TRAINING cont'd

Perform EWP controlled decent escape (EWPDP)

COURSE CODE	UETDRRF08B
LOCATION	On-Site / Private
MODE	Face to Face
DURATION	2-4 hours*
COST	\$120 - initial training \$79 - refresher training EWP truck hire (if applicable)

This Competency Standard Unit covers the performance of Elevated Work Platform (EWP) controlled decent escape procedures in the work place. It specifies the mandatory requirements for self rescue from a raised EWP and how they apply in the context of transmission, distribution or rail work functions. It encompasses responsibilities for health, safety and risk management processes at all operative levels and adherence to safety practices as part of the normal way of doing work.

PRE REQUISITES	Perform cardiopulmonary resuscitation (CPR) HLTAID001
PPE REQUIRED	Long Sleeve Hi-Vis Shirt & Pants Steel Capped Boots Helmet, Gloves , Safety Goggles
LLN SKILLS*	Reading 3 Writing 3 Numeracy 3
RECOGNITION	On successful completion of this unit, participants will be issued with a Statement of Attainment.
COMPETENCY ASSESSMENT	Participants will be required to successfully complete written and practical assessment to demonstrate they are competent in the application of this unit of competency.
RE-ACCREDITATION	As determined by employers WH&S Policy

Testing connections to low voltage electricity networks (POL)

COURSE CODE	UETDRRF11A
LOCATION	On-Site / Private
MODE	Face to Face
DURATION	2 days (16 hours)* (I) 2-4 hours* (R)
COST	\$650 (Initial) \$79 - (Refresher)

This Competency Standard Unit covers the performance of testing connections to low voltage electricity networks according to the relevant AS 4741. It specifies the mandatory requirements for testing when connecting and/or reconnecting a customer's installation to an electricity supply network. It encompasses the minimum principles and tests required to confirm that the low voltage supply connections are correct.

PRE REQUISITES	None required
PPE REQUIRED	Long Sleeve Hi-Vis Shirt & Pants Steel Capped Boots Helmet, Gloves , Safety Goggles
LLN SKILLS*	Reading 3 Writing 3 Numeracy 3
RECOGNITION	On successful completion of this unit, participants will be issued with a Statement of Attainment.
COMPETENCY ASSESSMENT	Participants will be required to successfully complete written and practical assessment to demonstrate they are competent in the application of this unit of competency.
RE-ACCREDITATION	As determined by employers WH&S Policy

Derek's skills and knowledge are industry leading. After recently completing training with GET Compliance, I feel confident knowing I can do my job better than ever! Thanks Derek and the GET Compliance team!

5 ★ - Nathan M

Working safely near live electrical apparatus as a non-electrical worker (WSNEA)

COURSE CODE	UETTDREL14A
LOCATION	On-Site / Private
MODE	Face to Face
DURATION	1 day (8 hours)*
COST	\$350

This Competency Standard Unit covers compliance with working safely up to the defined “safe approach distance” near energised electrical apparatus (inc. electrical powerlines) for non-electrical workers. It includes work functions that may be performed, such as vegetation control, scaffolding, rigging, painting, and/or any other activity that requires working safely and complying with requirements and/or established procedures near live electrical apparatus by a non-electrical worker. Also included is the preparation of risk assessment control measures that encompass job safety assessment. It does not include any work that is or may be performed by other competent operatives within the defined “safe working zone”. The defined “safe working zone” is that so defined by relevant State or Territory regulatory agencies/bodies, local government legislation, Industry bi-partite body - Guidelines/Codes of Practices or other related requirements for Safe Work and access near live Electrical and Mechanical Apparatus.

PRE REQUISITES	None required
PPE REQUIRED	Comfortable clothes Closed in shoes
LLN SKILLS*	Reading 3 Writing 3 Numeracy 3
RECOGNITION	On successful completion of this unit, participants will be issued with a Statement of Attainment.
COMPETENCY ASSESSMENT	Participants will be required to successfully complete written and practical assessment to demonstrate they are competent in the application of this unit of competency.
RE-ACCREDITATION	As determined by employers WH&S Policy

Perform tower rescue (STR)

COURSE CODE	UETTDRRF04B
LOCATION	On-Site / Private
MODE	Face to Face
DURATION	2-4 hours*
COST	\$120 - initial training \$79 - refresher training

This Competency Standard Unit covers the performance of rescue procedures from an Electricity Supply Industry tower in the work place. It specifies the mandatory requirements of rescue from as ESI tower and how they apply in the context of transmission, distribution or rail work functions. It encompasses responsibilities for health, safety and risk management processes at all operative levels and adherence to safety practices as part of the normal way of doing work.

PRE REQUISITES	Perform cardiopulmonary resuscitation (CPR) HLTAID001
PPE REQUIRED	Long Sleeve Hi-Vis Shirt & Pants Steel Capped Boots Helmet, Gloves , Safety Goggles
LLN SKILLS*	Reading 3 Writing 3 Numeracy 3
RECOGNITION	On successful completion of this unit, participants will be issued with a Statement of Attainment.
COMPETENCY ASSESSMENT	Participants will be required to successfully complete written and practical assessment to demonstrate they are competent in the application of this unit of competency.
RE-ACCREDITATION	As determined by employers WH&S Policy

*Derek, thanks for helping me out at the last minute.
Keep in touch. Again thanks for yesterday.*

5 ★ - Jamie M

NATIONALLY RECOGNISED TRAINING cont'd

Apply currency of safe working practices and compliance verification of electrical installations (G197) QTP

COURSE CODE	UEENEEG197A
LOCATION	On-Site / Private
MODE	Face to Face
DURATION	1 day (8 hours)* + Pre Assessment
COST	\$425

This unit covers current practices in working safely and verifying compliance of electrical installations that affect the currency of competencies held. It encompasses working safely, procedures for rescue from contact with live parts and for applying emergency first aid. It also encompasses current practices in visual inspections and mandatory compliance testing, identifying non-compliance defects and mandatory reporting requirements.

PRE REQUISITES	Competency in this unit can only be gained by persons who hold a current 'Unrestricted Electrician's Licence' issued in Queensland.
PPE REQUIRED	None required
LLN SKILLS*	Reading 5 Writing 5 Numeracy 5
RECOGNITION	On successful completion of this unit, participants will be issued with a Statement of Attainment.
COMPETENCY ASSESSMENT	Participants will be required to successfully complete a written assessment to demonstrate they are competent in the application of this unit.

Establish legal and risk management requirements of small business (B401) QBP

COURSE CODE	BSBSMB401
LOCATION	On-Site / Private
MODE	Face to Face/Online Coach
DURATION	1 day (8 hours)* + Pre Assessment
COST	\$425

This unit describes the skills and knowledge required to identify and comply with all regulations affecting the business. It applied to individuals operating a small business who use analytical skills to interpret legislation and regulations and develop procedures to manage compliance. There is an assessment portfolio to be completed for this course. Complement your trade knowledge with business acumen with this course.

PRE REQUISITES	None required
PPE REQUIRED	None required
LLN SKILLS*	Sound
RECOGNITION	On successful completion of this unit, participants will be issued with a Statement of Attainment.
COMPETENCY ASSESSMENT	Participants will be required to successfully complete a written assessment to demonstrate they are competent in the application of this unit of competency.



ELECTRICAL CONTRACTOR LICENCING

Our training courses comply with Energex requirements and will enable you to work on the Energex network. We also deliver supplementary training to provide safe access to all networks.

Prices listed are inclusive of GST.

Underground awareness

COURSE CODE	M428
LOCATION	On-Site / Private
MODE	Face to Face
DURATION	5 hours
COST	\$220

Basic fundamentals and facts about electricity and awareness appreciation of safety issues related to the underground supply network. Relationships between transmission, distribution, rail systems and overhead supply systems. Exclusions zone for given scenarios. Safety hazards and control measures. Electrical equipment identification and environmental issues. SAHV procedures, terminology and definitions. Follow requirements for isolation and earthing on a high voltage area. Identify and understand procedures, documentation and testing and role requirements.

Outcome: UUGAW

PRE-REQUISITES | None required

PPE REQUIRED | Full PPE

LLN SKILLS* | Sound

RECOGNITION | Statement of Achievement

COMPETENCY ASSESSMENT | Written



Electrical awareness for non-electrical workers

COURSE CODE	M320
LOCATION	On-Site / Private
MODE	Face to Face
DURATION	1 day (8-10 hours)
COST	\$395

Basic fundamentals and facts and awareness appreciation of safety issues related to the overhead supply network. Identify voltage, conductors, cables and equipment, exclusions zone for given scenarios, safety hazards and control measures.

Outcome: UOHOW

PRE-REQUISITES | None required

PPE REQUIRED | Full PPE

LLN SKILLS* | Sound

RECOGNITION | Statement of Achievement

COMPETENCY ASSESSMENT | Written

Overhead services

COURSE CODE	M203
LOCATION	On-Site / Private
MODE	Face to Face
DURATION	1 day (8-10 hours)
COST	\$395

Understand codes, standards and legislative requirements, service points and components and installation, inspection and maintenance of services.

Outcome: UOHSV

PRE-REQUISITES | None required

PPE REQUIRED | Full PPE

LLN SKILLS* | Sound

RECOGNITION | Statement of Achievement

COMPETENCY ASSESSMENT | Written

ENERGEX APPROVED TRAINING cont'd

Pole inspection for safe work

COURSE CODE	M287
LOCATION	On-Site / Private
MODE	Face to Face
DURATION	1 day (8-10 hours)
COST	\$395

Standards, codes, legislation supply authority regulations and/or enterprise requirements. Characteristics of wood used for structures within the electrical distribution system. Relationship between timber and water and faults that influence the integrity of the structure. Effects of fungal, termite borer activity and dry rot. Inspection procedures for deterioration.

Outcome: APISW

PRE-REQUISITES | None required

PPE REQUIRED | Full PPE

LLN SKILLS* | Sound

RECOGNITION | Statement of Achievement

COMPETENCY ASSESSMENT | Written

Connections to the LV network

COURSE CODE	M292
LOCATION	On-Site / Private
MODE	Face to Face
DURATION	16 hours
COST	\$650

This is an Energex developed course for electrical staff and contractors.

Outcome: ACONN

PRE-REQUISITES | Electrical Workers Licence

PPE REQUIRED | Full PPE

LLN SKILLS* | Sound

RECOGNITION | Statement of Achievement

COMPETENCY ASSESSMENT | Written

Substation awareness

COURSE CODE	M204
LOCATION	On-Site / Private
MODE	Face to Face
DURATION	4 hours
COST	\$220

Identify major components of equipment and identify safety requirements in a substation.

OUTCOME | USSAW

PRE-REQUISITES | None required

PPE REQUIRED | Full PPE

LLN SKILLS* | Sound

RECOGNITION | Statement of Achievement

COMPETENCY ASSESSMENT | Written

Individual of a workgroup

COURSE CODE	M581
LOCATION	On-Site / Private
MODE	Face to Face
DURATION	4 hours
COST	\$220

This is an Energex developed course that will enable you to apply to be authorised to work as an individual of a workgroup (IWG) under the direction of a recipient or on-site supervisor.

Outcome: UUGAW

PRE-REQUISITES | None required

PPE REQUIRED | Full PPE

LLN SKILLS* | Sound

RECOGNITION | Statement of Achievement

COMPETENCY ASSESSMENT | Written

Our specialty safety training is designed to be a skills maintenance program to assist an employer to meet their duty of care in providing additional training to their staff.

Prices listed are inclusive of GST.

Working on energised LV overhead conductors

COURSE CODE	M340/M341
LOCATION	On-Site / Private
MODE	Face to Face
DURATION	1 day (8-10 hours)
COST	\$350

Monitor potential hazards associated with energised overhead electrical work. Ensure communication and safe system of work. Application of insulating mats.

Outcome: UM341

PRE-REQUISITES | Electrical Workers Licence

PPE REQUIRED | Full PPE

LLN SKILLS* | Sound

RECOGNITION | Statement of Achievement

COMPETENCY ASSESSMENT | Written

Working on energised LV underground cables and equipment

COURSE CODE	M340/M342
LOCATION	On-Site / Private
MODE	Face to Face
DURATION	1 day (8-10 hours)
COST	\$350

Conditions under which it is permitted to carry out live low voltage (LV) work. Rules for work live and roles of safety observer. Applying safe work practices.

Outcome: UM342

PRE-REQUISITES | Electrical Workers Licence

PPE REQUIRED | Full PPE

LLN SKILLS* | Sound

RECOGNITION | Statement of Achievement

COMPETENCY ASSESSMENT | Written

Working on energised LV electrical installation

COURSE CODE	M340/M343
LOCATION	On-Site / Private
MODE	Face to Face
DURATION	1 day (8-10 hours)
COST	\$350

Monitor potential hazards associated with energised low voltage electrical equipment. Apply safe work practices. Apply appropriate matting and covering techniques.

Outcome: UM343

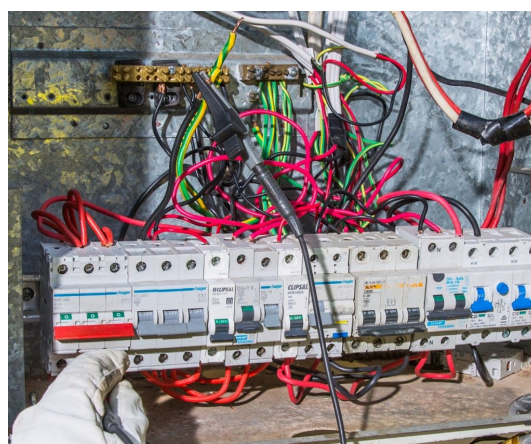
PRE-REQUISITES | Electrical Workers Licence

PPE REQUIRED | Full PPE

LLN SKILLS* | Sound

RECOGNITION | Statement of Achievement

COMPETENCY ASSESSMENT | Written



SPECIALTY SAFETY TRAINING cont'd

LOW VOLTAGE ELECTRICAL OPERATIONS

AS/NZS 3000:2007

Electrical installations - wiring rules

COURSE CODE	LV001
LOCATION	On-Site / Private
MODE	Face to Face
DURATION	1 day (8-10 hours)
COST	\$350

This course provides the participants with information on changes to the wiring rules which may go unnoticed by the workers.

Electrical safety legislation

COURSE CODE	LV002
LOCATION	On-Site / Private
MODE	Face to Face
DURATION	1 day (8-10 hours)
COST	\$350

The impact on a business and their workers can be significant if they are not aware of their duty of care obligations. This information session provides that awareness and the application of that duty into their everyday work.

Investigating shock complaints and fault finding

COURSE CODE	LV003
LOCATION	On-Site / Private
MODE	Face to Face
DURATION	1 day (8-10 hours)
COST	\$350

This is high risk following a reported shock or fatality. Specified learning outcomes are required for compliance with legislation, reporting to correct authorities, preservation of the accident site and documenting evidence. Worker safety during these activities is critical.

Electron migration theory

COURSE CODE	LV006
LOCATION	On-Site / Private
MODE	Face to Face
DURATION	Half day (4-5 hours)
COST	\$195

Back to basics for the application of electrical theory. Enables workers to fully understand the operation of the MEN system, polarity testing and in particular, fault conditions.

Loop Impedance Testing

COURSE CODE	LV007
LOCATION	On-Site / Private
MODE	Face to Face
DURATION	Half day (4-5 hours)
COST	\$195

This course provides participants with information regarding Loop Impedance testing.

RCD Testing & Fault Finding

COURSE CODE	LV008
LOCATION	On-Site / Private
MODE	Face to Face
DURATION	Half day (4-5 hours)
COST	\$195

This course provides participants with information on RCS testing and finding.

Derek took a Fault Loop Impedance course in Hobart and can easily say it has been the best course I have attended to date. Very knowledgeable and passionate bloke. Went above and beyond my expectations, highly recommend to anybody.

5★ - Jack H

HIGH VOLTAGE SWITCHING, ISOLATION & ACCESS

High voltage safety awareness

COURSE CODE	HV001
LOCATION	On-Site / Private
MODE	Face to Face
DURATION	1 day (8-10 hours)
COST	\$350

An instructor led session that provides awareness and safety information for all persons coming in the vicinity of high voltage apparatus.

High voltage distribution network access manual

COURSE CODE	OM52
LOCATION	On-Site / Private
MODE	Face to Face
DURATION	1 day (8-10 hours)
COST	\$350

An instructor led session that examines the procedures regarding the roles and responsibilities typically associated with the access of high voltage apparatus.

PRE REQUISITE | HV001 & HV002

High voltage distribution networks

COURSE CODE	HV002
LOCATION	On-Site / Private
MODE	Face to Face
DURATION	1 day (8-10 hours)
COST	\$350

Design principles of high voltage network. Operating priorities of safety.

RENEWABLE ENERGY TRAINING

We deliver renewable energy training in partnership with Global Sustainable Energy Solutions (GSES) RTO 91461. Australia's leading training provider in renewable energy innovation and technology. These courses are delivered to help those specialising in photovoltaic systems design and install with and without batteries, and solar training for government and private enterprise.

Design and install grid connected photovoltaic systems

COURSE CODE	RE001
LOCATION	GSES
MODE	Face to Face/Online
DURATION	Online + 3 days
COST	\$2,250 GST does not apply

This course is designed for electricians who already hold an electrician's qualification and wish to further their skills by gaining a qualification to design and install grid-connected photovoltaic systems.

This course is self paced online learning plus three (3) days practical training.

Design and install grid connected PV systems with batteries

COURSE CODE	RE002
LOCATION	GSES
MODE	Face to Face/Online
DURATION	Online + 3 days
COST	\$2,250 GST does not apply

This course is available for licenced electricians who have already been found competent in the following units: UEENEEK125A, UEENEEK135A, UEENEEK148A (proof is required).

Training comprises online material as well as three (3) days of testing, commissioning and programming selected multi-mode inverters, hands on installation of a battery system and theory revision.

Continuing professional development program

COURSE CODE	RE003
LOCATION	GSES
MODE	Face to Face/Online
DURATION	1 day (8-10 hours)
COST	\$295 including GST

This continuing professional development (CPD) program includes three (3) short courses, delivered combined over one full day.

Interpreting Electricity Bills and Interval Metering

How to breakdown costs in residential and commercial energy bills and how they can be addressed through the installation of PV and battery systems (30 CPD Points)

Sizing Battery Systems

Principles of sizing batteries to address identified costs, specific drivers behind various battery systems, battery technologies available and basic financial modelling of battery systems . (40 CPD Points)

Standards of Batter Storage Systems

Safe installation of a battery storage system in the home, general requirements including sizing of battery cables, fusing and isolation, and technology specific items such as space and ventilation for lead acid batteries and battery management systems for lithium ions. (40 CPD Points)

We pride ourselves on personalised service and tailored delivery. Contact us to discuss your training, licensing, safety or auditing needs and we will work with you to make it happen.



PHONE
07 5428 1116



WEB
www.getcompliance.com.au



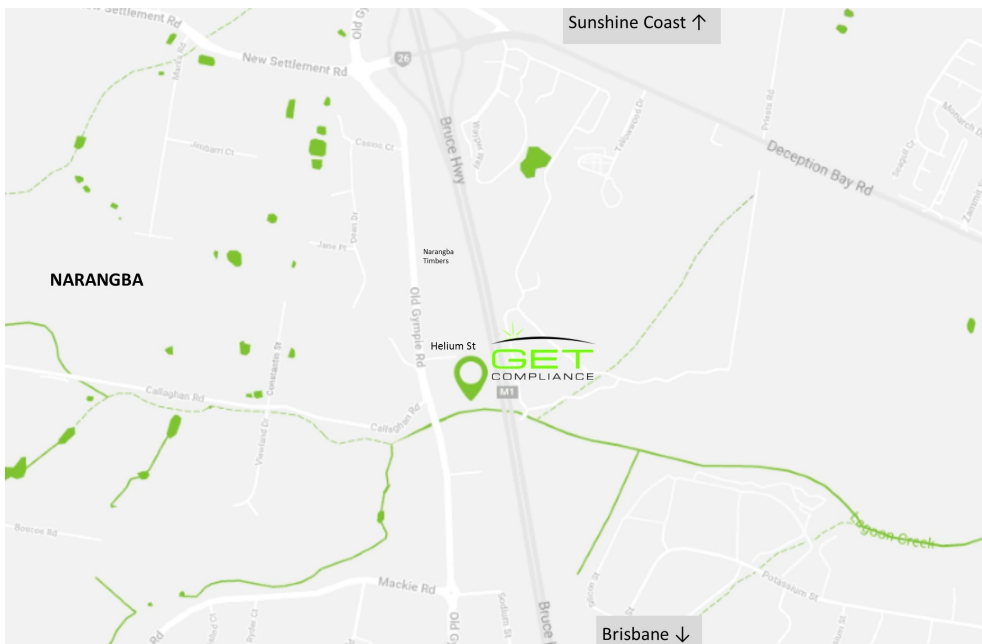
EMAIL
admin@getcompliance.com.au



OFFICE HOURS
5/10 Helium Street, Narangba
Monday - Thursday 7:30am - 4:00pm
Friday 7:30am - 2:00pm



GET Compliance Training Centre
5/10 Helium Street, Narangba



ENROLMENT

IS IT EASY TO ENROL?

Yes it is! GET Compliance welcomes all persons who desire to learn and experience our supportive learning environment.

If you are not sure about how to enrol or need advice about the course you wish to attend, we can organise an appointment for you to discuss your enrolment with the relevant trainer.

HOW TO ENROL?

1

CHOOSE YOUR COURSE

Download our Training Course Guide getcompliance.com.au/trainingcourseguide and find the course that suits your requirements. If you don't know which course/s you need to complete or where to start, let us know and we can guide you with the information provided by you.

2

CHECK THE COURSE ENTRY REQUIREMENTS (PRE-REQUISITES)

Some of our courses don't have any entry requirement or pre-requisites, however, some courses may require very specific pre-requisites for you to undertake the training. You can find the information in our Training Courses Guide or on our web site for any of the courses you wish to enrol into.

3

READ AND UNDERSTAND IMPORTANT INFORMATION

It is vital that you take the time to read through this Student Information Booklet so you are aware of and understand the GET Compliance Policies and Procedures. If you do not understand any of the detail within this booklet, please ensure you contact our office to gain clarification.

4

CONTACT US FOR TRAINING DATES

Please contact us for available dates to conduct the course/s you are interested in enrolling for. We cannot hold dates for you. We will provide you with one or more dates that GET Compliance Trainers are available to undertake the training you require. It is then up to you to ensure you secure the date by enrolling.

5

COMPLETE THE ENROLMENT FORM

Complete our enrolment form and return to us with the upmost urgency so that you can secure your place in the course/s.

Please email this form to admin@getcompliance.com.au for processing.

6

CONFIRMATION OF TRAINING

Upon receipt of your enrolment form, it will be processed and the booking secured. Your booking is not confirmed until you receive an email from us titled CONFIRMATION of Training with GET Compliance.

Attendance to any one of the courses we offer does not guarantee that:

- * a student will successfully complete the training program; and
- * The training program will be successfully completed if it is undertaken in a manner that does not comply with the Standards for Registered Training Organisations (RTOs) 2015.

GET Compliance provides all the relevant training and assessment resources to demonstrate competency, unless otherwise stated.

GET Compliance is not a VET FEE-HELP approved training provider.

SPECIAL ACCESS NEEDS

Please ensure you advise GET Compliance upon booking if you or your staff have any special needs with regards to access within our training facilities.

PRIVATE or GROUP WORKSHOP BOOKINGS

To be able to provide this service, there is a minimum attendance of 8 participants. The costs for a private or group workshop that is to be conducted away from the GET Compliance Training Centre or at your organisation will be different to those stated. Please contact us for a quote.

CLASS SIZES

Whilst there is some variation, class sizes are generally kept to a maximum of 8-10 students to ensure the quality of training and assessment is not compromised.



GET COMPLIANCE

Your safety is our priority

5/10 Helium Street, NARANGBA, Q 4504

P 07 5428 1116

E admin@getcompliance.com.au